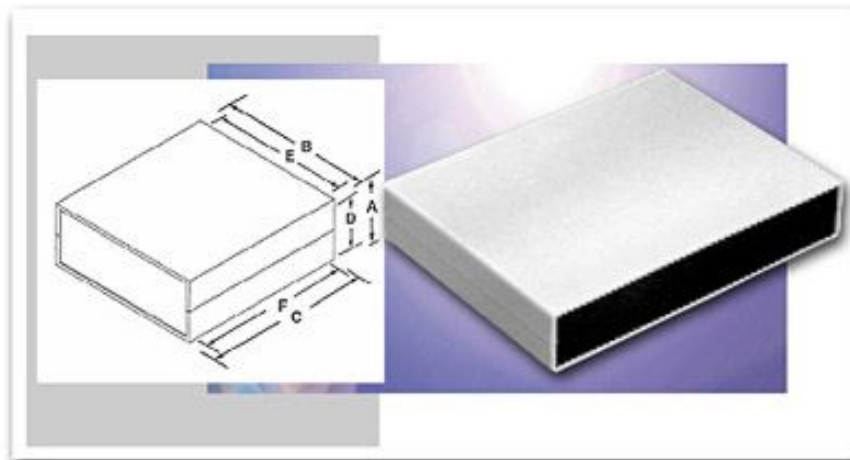


Plastic Boxes
Plasticase
Style D



[Click on Image for Larger View](#)

(STYLE CHANGE) These sturdy enclosures come in a variety of styles and sizes and are constructed of high quality plastic materials. Housing designs allow complete accessibility to internal components. Contact BUD factory for optional colors, materials, EMI/RFI shielding and custom modifications.

Design Features

Style D Molded in card guides and mounting bosses Available in four versions.

#1 - Dark gray ABS covers with light gray ABS end panels. UL94V-0 flammability rating, suggested service temperature -40C to 80C

#2 - Dark gray ABS covers with natural finish aluminum end panels. UL94V-0 flammability rating suggested service temperature -40C to 80C

#3 - Light gray ABS covers with black ABS end panels. UL94-HB flammability rating, suggested service temperature -40C to 80C

#4 - Light gray ABS covers with natural finish aluminium end panels. UL94-HB flammability rating, suggested service temperature -40C to 80C



Style D									
Version 1	Drawings	A	B	C	D	E	F	Size	Weight (Ozs.)
PC-11480	PDF DXF	1.38"	5.51"	4.33"	1.18"	5.32"	4.07"	1.20"x 5.31"x .07"	4.6
PC-11481	PDF DXF	1.57"	8.86"	6.50"	1.35"	8.62"	6.24"	1.37"x 8.62"x .07"	12.3
PC-11482	PDF DXF	2.56"	10.24"	7.09"	2.32"	10.00"	6.78"	2.36"x 10.00"x .07"	17.8

Style D

Version 2	Drawings	A	B	C	D	E	F	Size	Weight (Ozs.)
PC-11480-A	PDF DXF	1.38"	5.51"	4.33"	1.18"	5.32"	4.07"	1.20"x 5.31"x .07"	4.6
PC-11481-A	PDF DXF	1.57"	8.86"	6.50"	1.35"	8.62"	6.24"	1.37"x 8.62"x .07"	12.3
PC-11482-A	PDF DXF	2.56"	10.24"	7.09"	2.32"	10.00"	6.78"	2.36"x 10.00"x .07"	17.8

Style D									
Version 3	Drawings	A	B	C	D	E	F	Size	Weight (Ozs.)
PC-11480-LG	PDF DXF	1.38"	5.51"	4.33"	1.18"	5.32"	4.07"	1.20"x 5.31"x .07"	4.6
PC-11481-LG	PDF DXF	1.57"	8.86"	6.50"	1.35"	8.62"	6.24"	1.37"x 8.62"x .07"	12.3
PC-11482-LG	PDF DXF	2.56"	10.24"	7.09"	2.32"	10.00"	6.78"	2.36"x 10.00"x .07"	17.8

Style D									
Version 4	Drawings	A	B	C	D	E	F	Size	Weight (Ozs.)
PC-11480-LGA	PDF DXF	1.38"	5.51"	4.33"	1.18"	5.32"	4.07"	1.20"x 5.31"x .07"	4.6
PC-11481-LGA	PDF DXF	1.57"	8.86"	6.50"	1.35"	8.62"	6.24"	1.37"x 8.62"x .07"	12.3
PC-11482-LGA	PDF DXF	2.56"	10.24"	7.09"	2.32"	10.00"	6.78"	2.36"x 10.00"x .07"	17.8

[DXF](#) Autocad DXF Specifications File
(Requires CAD software such as AutoCAD)

[PDF](#) Adobe PDF Specifications File



[Download PDF Viewer](#)

[Home](#) | [Company Info](#) | [Online Catalog](#) | [Check Stock](#) | [Distributor/Price](#)

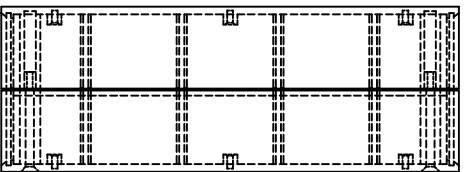
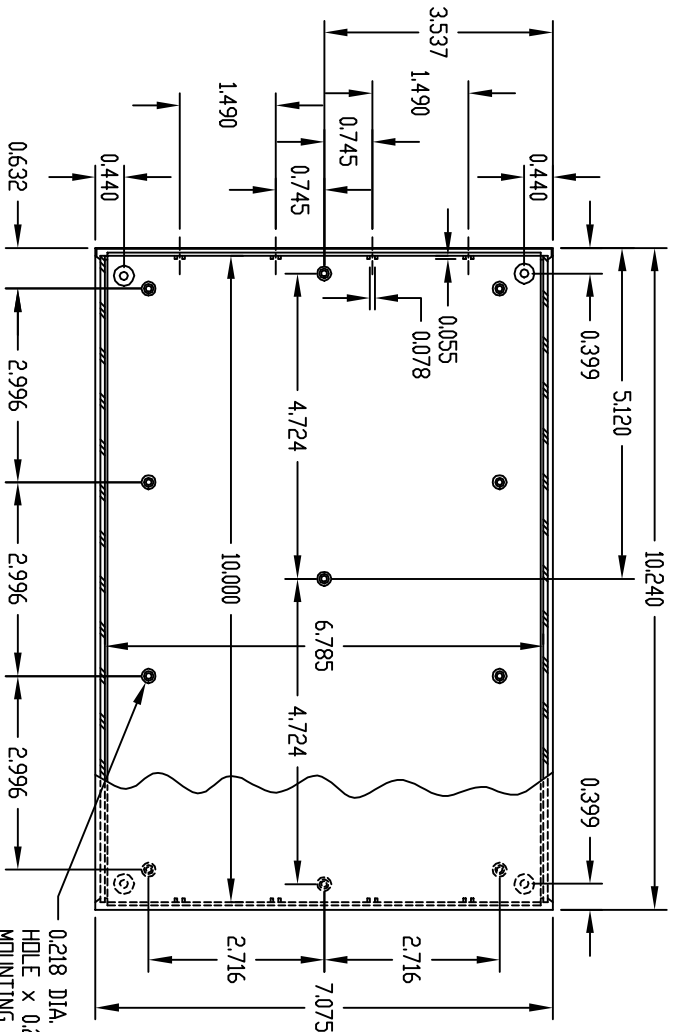
[Reps](#) | [New](#) | [Search](#) | [Contact](#) | [Privacy Policy](#)

BUD INDUSTRIES INC.

P.O. Box 998
Willoughby, Ohio 44094
Phone: 440-946-3200 Fax: 440-951-4015
E-Mail: saleseast@budind.com

PART NAME PLASTICASE (STYLE E)

PART No. PC-11482 & PC-11482-A & PC-11482-LG & PC-11482-LGA



0.218 DIA. BOSS WITH 0.090 DIA. HOLE x 0.218 DEEP - (22) PLACES MOUNTING BOSSSES USE EITHER M2.5 METRIC OR #4 STD. SHEET METAL SCREWS x 0.188" LG. (NOT SUPPLIED)

MATERIAL & FINISH:

- (ND SUFFIX) UL94V-0 FLAME RETARDANT ABS
- DARK GRAY PLASTIC COVERS WITH LIGHT GRAY PLASTIC PANELS.
- (SUFFIX -A) UL94V-0 FLAME RETARDANT ABS
- DARK GRAY PLASTIC COVERS WITH NATURAL FINISH ALUMINUM PANELS.
- (SUFFIX -LG) HIGH-IMPACT ABS
- LIGHT GRAY PLASTIC COVERS WITH BLACK PLASTIC PANELS.
- (SUFFIX -LGA) HIGH-IMPACT ABS
- LIGHT GRAY PLASTIC COVERS WITH NATURAL FINISH ALUMINUM PANELS.

FOUR (4) M3 x 1.750" LG. SCREWS SUPPLIED FOR ASSEMBLY.

FOUR (4) RUBBER SELF-ADHESIVE FEET SUPPLIED.

NOTE: ALL DIMENSIONS HAVE ±0.015 TOLERANCE UNLESS OTHERWISE SPECIFIED.

